



# ENFit

2018

# Why is RCH transitioning to ENFit?



- In response to a new international standard
- To prevent medication preparation and administration errors
- Links to Medication Safety – National Safety and Quality Health Service Standard

# RCH transition to ENFit



2016  
ENFit  
compatible  
MIC-KEY  
PEGs



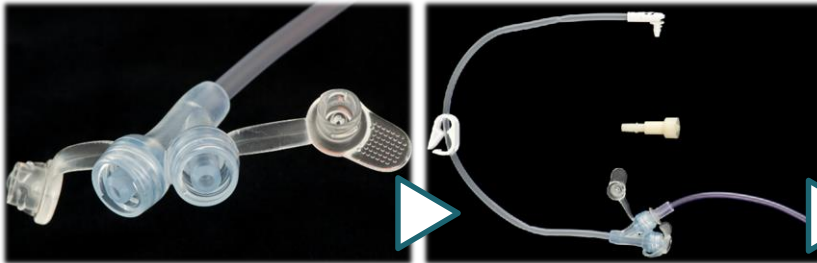
2016  
ENFit  
compatible  
feeding  
sets



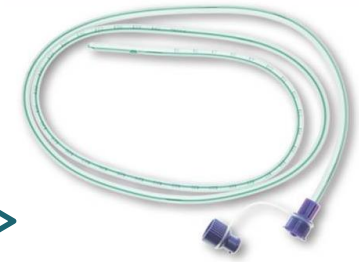
2018  
ENFit  
Syringes  
(and accessories)



2018  
ENFit  
compatible  
nasogastric  
(NG) and  
nasojejunal  
(NJ) tubes



Picture courtesy of AMSL



Picture courtesy of ConvaTec



Picture courtesy of Halyard Health

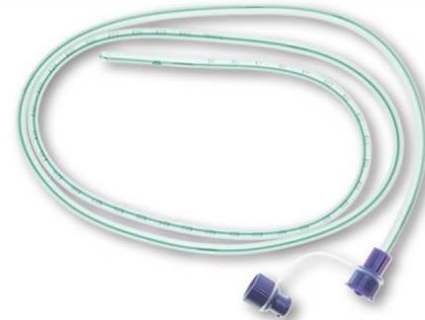
# ENFit NG/NJ Feeding Tubes



- Long term feeding tubes changing to ENFit
  - Corpak Corflo®
  - 60 days use
- Short term feeding tubes changing to ENFit
  - ConvaTec (5F, 6F, 8F)
  - 28 days use



Picture courtesy of Halyard Health



Picture courtesy of ConvaTec



Picture courtesy of AMSL

## Important Note:

Ryles Tubes **NOT** changing to ENFit

# ENFit accessories



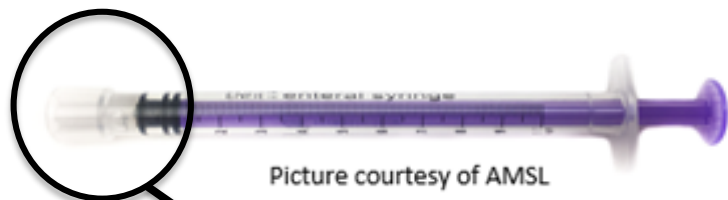
- Drawing up accessories:
  - Bottle top adaptors
  - Drawing up straws
  - Blunt drawing up needles
- Syringe caps
- Transition adaptors
- Drainage Bags
- Gastric Decompression System (Platypus & Cockatoo)
- Surfactant Kits (Butterfly)

# ENFit syringes



ENFit Low  
Dose Tip  
Oral  
Syringes

1ml  
2.5ml



Syringe tip

Moat

ENFit  
Standard  
Tip  
Syringes

10ml  
20ml  
60ml



Syringe tip

Thread

# What are the key implications for practice?



## 1. Selecting the appropriate size syringe

– For example:

**2 ml of medication required**

- Utilise **2.5ml ENFit Low Dose Tip Oral Syringe**



Picture courtesy of AMSL

**2.6 ml of medication required**

- Utilise **10ml ENFit Standard Tip Syringes**



Picture courtesy of AMSL

# What are the key implications for practice?



## 2. Drawing up using a drawing up device:

### – a. Bottle top adaptor

1.  
Attach ENFit  
syringe to  
the bottle  
top adaptor



2.  
Turn the  
bottle upside  
down with  
ENFit syringe  
attached



3.  
Draw up  
prescribed  
dose



4.  
Turn the  
bottle right  
side up and  
disconnect  
ENFit syringe





# What are the key implications for practice?



## 2. Drawing up using a drawing up device: – b. Drawing up straw

1.  
Connect  
the ENFit  
syringe to  
the  
drawing up  
straw

2.  
Draw up  
medication  
and  
disconnect  
the ENFit  
syringe from  
the drawing  
up straw

3.  
Bring  
medication  
up to the  
shoulder or  
top black  
line of the  
ENFit  
syringe

4.  
If there is  
excess  
medication -  
reconnect  
ENFit syringe  
to drawing  
up straw and  
return excess

5.  
Disconnect  
ENFit  
syringe

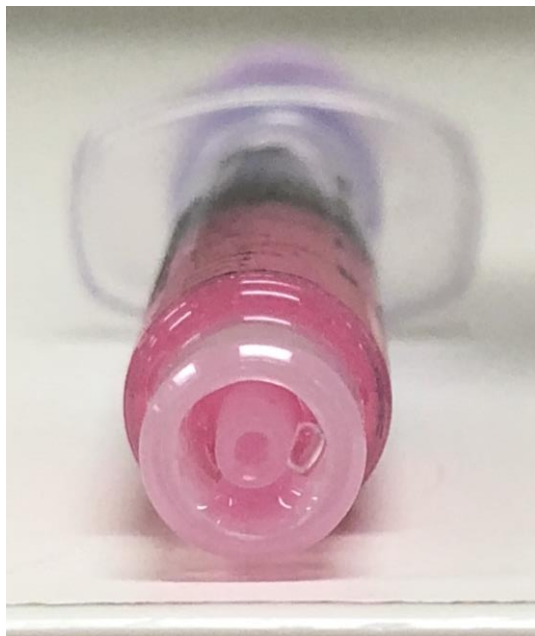


# What are the key implications for practice?



It is important to use a drawing up device to avoid the following scenarios

Medication around the moat of the ENFit Low Dose Tip Oral Syringe



Medication in the tip of the ENFit Standard Tip Syringe

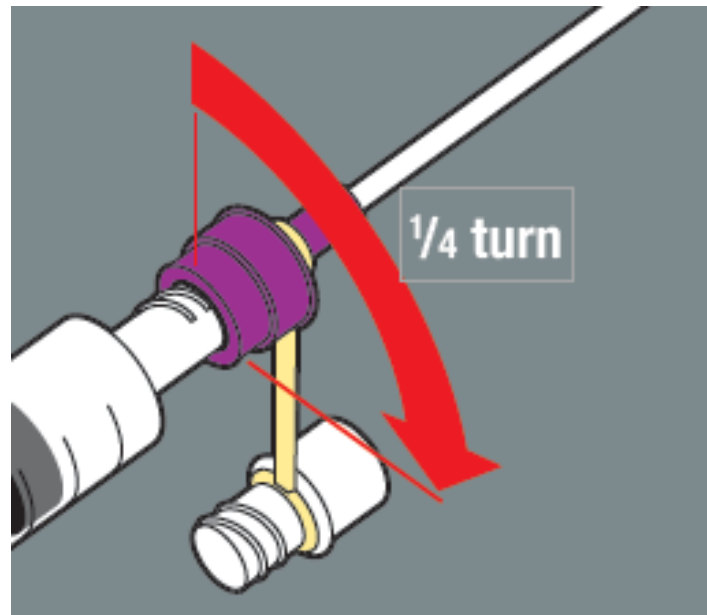


# What are the key implications for practice?



## 3. Making a connection

- When making connections using ENFit Standard Tip Syringes it is only necessary to tighten the connection by  $\frac{1}{4}$  turn



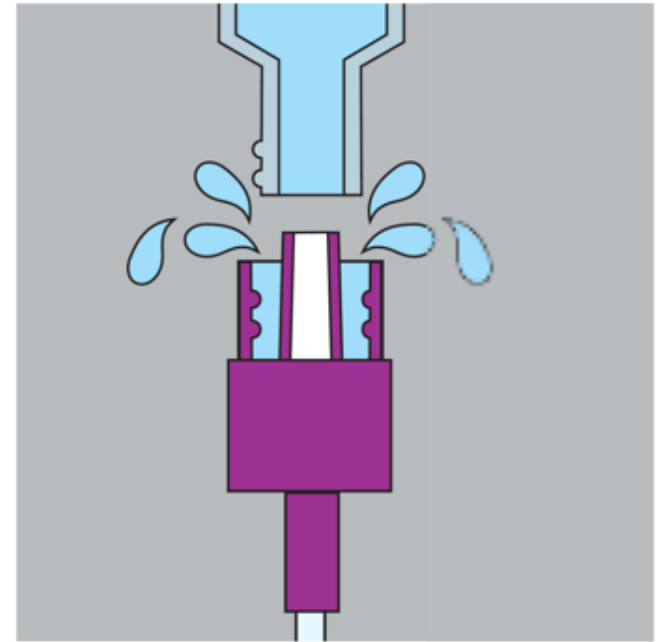
Picture courtesy of AMSL

# What are the key implications for practice?



## 4. Keeping connector threads clean

- It is good routine practice, following feeds or the administration of medications, to flush the inside threads of the tubes. This will prevent any disconnection problems and help to keep the device clean



Picture courtesy of AMSL

# In summary



- RCH transition to ENFit
  - ENFit Feeding Tubes
  - ENFit Syringes
- Types of ENFit Syringes
  - ENFit Low Dose Oral Tip
  - ENFit Standard Tip
- Accessories available
- Key implications for practice
  1. Selecting the appropriate sized syringe
  2. Draw up prescribed medication dose using a drawing up device
  3. Make a connection using  $\frac{1}{4}$  turn
  4. Keep connector threads clean



Developed by Nursing Education in consultation with Briohny Lawrance (Clinical Products Advisor, Procurement) incorporating material provided by:

- Australasian Medical and Scientific Ltd (AMSL)
- ConvaTec
- Halyard Health

**Melbourne Children's**

A world leader  
in child and  
adolescent  
health



The Royal  
Children's  
Hospital  
Melbourne



**Murdoch  
Childrens  
Research  
Institute**



THE UNIVERSITY OF  
MELBOURNE